

NS1 + GRAFANA.

GRAFANACON 2018



DNS THAT MOVES TM



Carl Levine

WWW.NS1.COM | [@NSONEINC](https://twitter.com/NSONEINC)

SLIDE 1

The NS1 Platform



Managed DNS.

Cloud-based, intelligent DNS for application developers that crave speed, precision, and control over internet traffic



Dedicated DNS.

NS1's industry leading platform in dedicated, fully managed deployments available on-prem or in the cloud

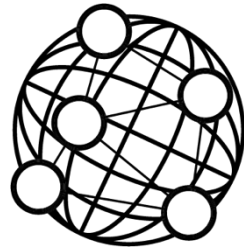


Pulsar.

Real user monitoring based traffic management. Use your own or use community data to optimize user experience

• Capabilities

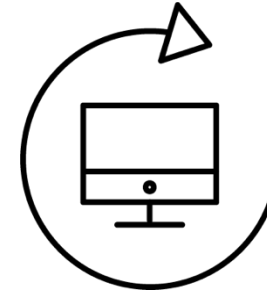
Multi-CDN
Optimization



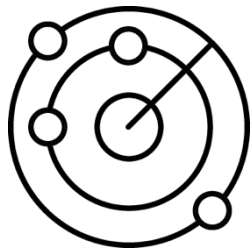
Data Center
Migration



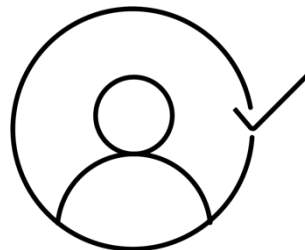
Digital
Transformation



Global Load
Balancing



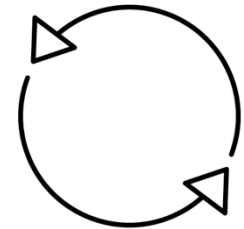
Customer
Experience



Secondary
DNS



Disaster
Recovery



• **Why Visibility Into DNS Is Crucial in 2018**

- Understanding where your users are
 - Helps with planning infrastructure / cloud spend
- Targeting anomalies in traffic volume
 - Minimize impact of DDoS and other volumetric attacks
- Fine tuning of advanced traffic management features
 - Optimize traffic shedding based on origin IP

**USE ALL THE DATA YOU CAN:
NS1 IS HERE TO MAKE SENSE OF IT ALL.**



NS1.

• It Begins With APIs + Integrations

- **API:** A comprehensive RESTful API serves as the underpinnings of the entire NS1 offering.
- **Integration:** Native Grafana app is designed to pipe data out from NS1's DNS solutions to provide rich context around the state of your infrastructure.



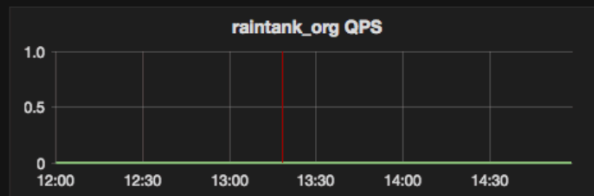
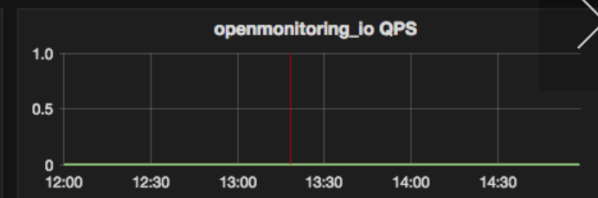
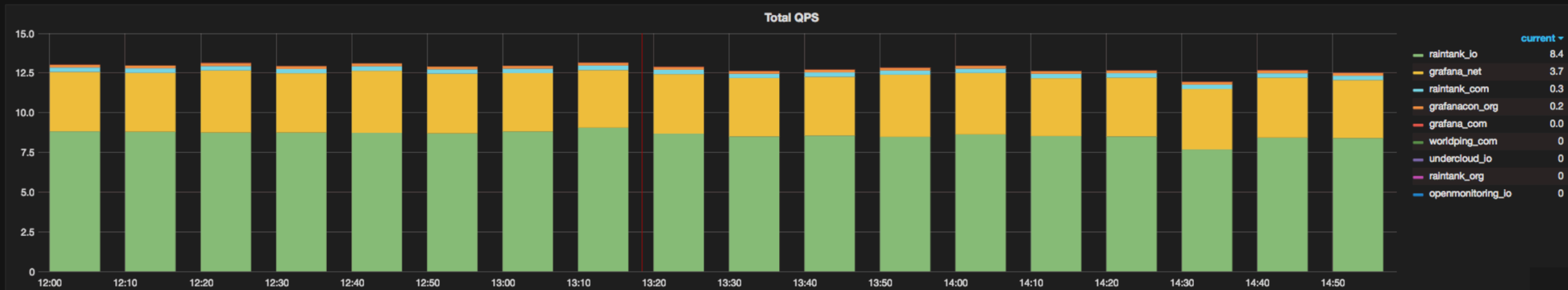


NS1 Zones



Zoom Out Last 3 hours

zone: All



NS1.

• NS1 + Grafana

- **Supported metrics**

- Queries per second, broken down by zone
- DNS monitoring
- HTTP monitoring
- Ping (ICMP) monitoring
- TCP monitoring
- NS1 monitoring from multiple regions with rapid recheck to prevent false positives

• DNS That Moves With Your Existing Data

Meta-Data Drives Intelligence:

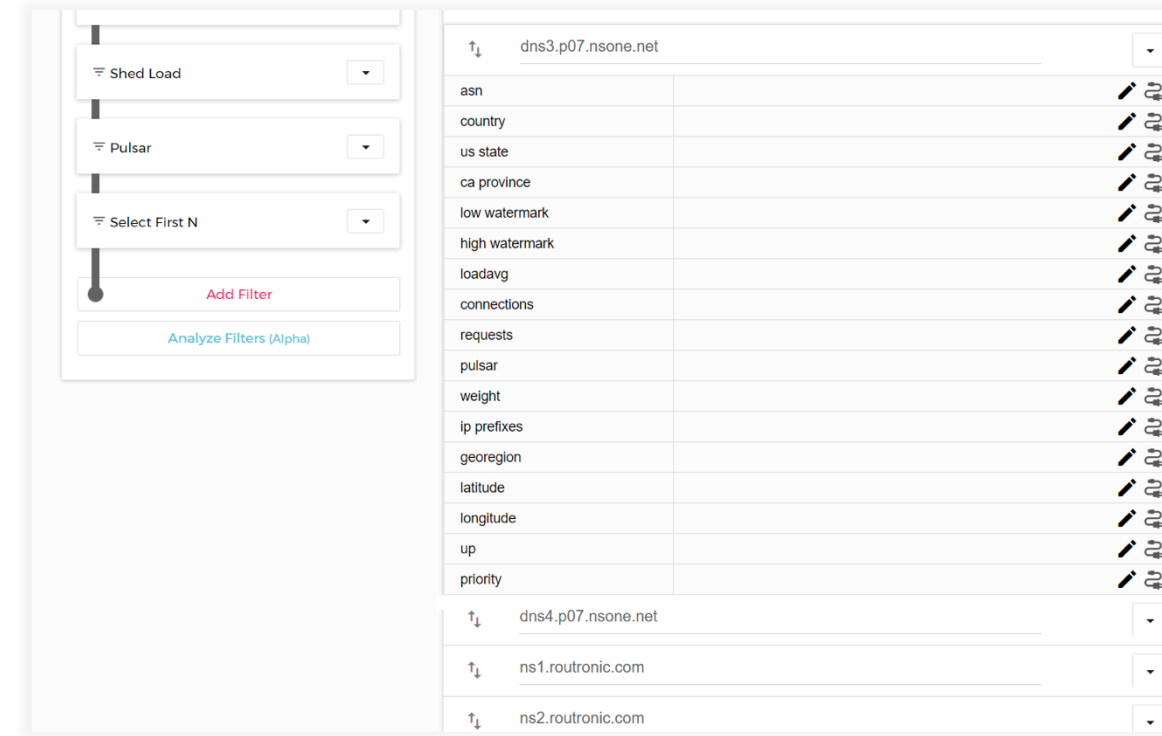
- Geo and Network (ASN)
- Up/Down Status
- Latency
- Bandwidth
- Capacity
- Load (current connections)
- Cost

“

I've never seen another DNS service quite like NS1. I feel that their data-driven approach, combined with their incredible flexibility, makes them the next generation DNS host.

”

- Alan Schaaf, CEO,
Imgur (Alexa Top 50 Global Traffic)



The screenshot shows the NS1 dashboard interface. On the left, there are three filter controls: 'Shed Load', 'Pulsar', and 'Select First N', each with a dropdown arrow. Below these is a slider control and two buttons: 'Add Filter' (in red) and 'Analyze Filters (Alpha)' (in blue). On the right, there is a table of DNS records. The table has a header row with a search icon and the text 'dns3.p07.nsone.net'. The table contains 15 rows of data, each with a column for a metric and a column for a value. The metrics are: asn, country, us state, ca province, low watermark, high watermark, loadavg, connections, requests, pulsar, weight, ip prefixes, georegion, latitude, longitude, up, and priority. Each row has a corresponding value and a set of icons (edit, delete, etc.) on the right.

dns3.p07.nsone.net	
asn	
country	
us state	
ca province	
low watermark	
high watermark	
loadavg	
connections	
requests	
pulsar	
weight	
ip prefixes	
georegion	
latitude	
longitude	
up	
priority	

Below the table, there are three more search bars with the following text: 'dns4.p07.nsone.net', 'ns1.routronic.com', and 'ns2.routronic.com'.

THANK YOU.

DNS THAT MOVES TM



Carl Levine

WWW.NS1.COM | [@NSONEINC](https://twitter.com/NSONEINC)

SLIDE 10